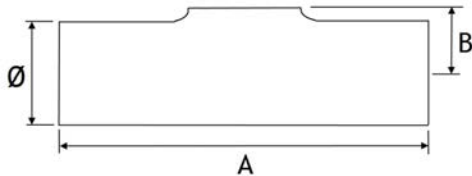


90° & 45° METRIC ELBOWS

	54 x 2	69 x 2	84 x 2	104 x 2	129 x 2	154 x 2	204 x 2	254 x 2
90° 316	2480260	2480280	2480290	2480295	2480300	2480302	2480305	2480310
90° 304	2480360	2480394	2480396	2480398	2480400	2480402	2480405	2480408
45° 316	-	-	-	-	2480435	2480437	2480439	-
45° 304	-	-	-	-	-	2480440	2480442	-
Ø	54	69	84	104	129	154	204	254
R	73	95	123	150	188	225	300	375
T	2	2	2	2	2	2	2	2

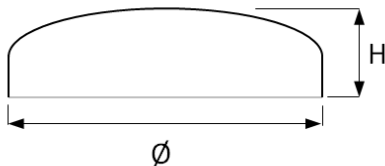


AS PULLED METRIC TEE

	5" (129mm)	6" (154mm)	8" (204mm)
Code: 316	2480450	2480455	2480460
Code: 304	2480480	2480485	2480490
Ø	129	154	204
A	248	286	256
B	70	84	110
Thickness	2	2	2

AVAILABLE IN BOTH GRADE 304 & 316
SMALLER & LARGER SIZES AVAILABLE ON REQUEST.

NOTE: DIMENSION "H" CAN VARY, DUE TO BEING PRODUCED AS PULLED



METRIC DOMED END CAP 316

	5" (129mm)	6" (154mm)	8" (204mm)
Stock Code	0980527	0980529	0980530
Ø	129	154	204
H	34	41	50
Thickness	2	2	2



SMALLER & LARGER SIZES AVAILABLE ON REQUEST.
OD END CAPS ALSO AVAILABLE - SEE PAGE 18